



NCDXF newsletter

www.ncdxf.org

Fall 2021

What will Antarctic DXpeditions be like in the future without the R.V. *Braveheart*?

Ned Stearns, AA7A

DXPEDITIONS TO MANY OF THE islands that lie beyond the 40th parallel south rely mightily upon a special class of boat and crew for success. There is no other practical method to access most of the islands in the southern Atlantic without boarding a boat and being tossed around for a few weeks to get close and then relying on the crew to assist getting the operators and equipment on and off these inhospitable islands. The R.V. *Braveheart* and its former owner and sometimes captain, Nigel Jolly, has played a significant role in 14 high profile DXpeditions between 1999 and 2020, which had a substantial impact on the DXing game.



R.V. Braveheart anchored in Port Stanley for the 2016 VP8STI/VP8SGI DXpedition.

The *Braveheart* was recently sold and will likely no longer serve the ham radio community, but it will always be remembered by many as the boat and

crew that reliably delivered as hoped on every DXpedition where it was used.

Onboard *Braveheart*

My sole encounter with the *Braveheart* was on the Intrepid DX Group's
continued on page 3



Braveheart crew and boat owner Nigel Jolly (right) on the 2016 VP8SGI/VP8STI DXpedition.

INSIDE THIS ISSUE

R.V. Braveheart.....	1
President's message	2
Radio In A Box update.....	4
NCDXF Donations & Contributions.....	5
Region 2 YOTA Summer Camp.....	6
Blast from the Past.....	7
Board of Directors profile....	8
3YØJ Bouvet Island	9
Cycle 25 Fund & Cycle 25 Society.....	10
NCDXF lending library.....	10
NCDXF products.....	10



NCDXF

P.O. Box 2012
CUPERTINO, CA
95015-2012
USA

www.ncdxf.org

PresidentKEVIN ROWETT, K6TD
kevin@rowett.org

Vice President.....NED STEARNS, AA7A
aa7a@cox.net

SecretaryGLENN JOHNSON, WØGJ
w0gj@arrl.net

TreasurerDON GREENBAUM, N1DG
don@aurumtel.com

DirectorsTOM BERSON, ND2T
berson@anagram.com

CRAIG THOMPSON, K9CT
craig@thompsonet.com

ROSS FORBES, K6GFJ
k6gfj@comcast.net

JOHN MILLER, K6MM
webaron@gmail.com

RICH SEIFERT, KE1B
ke1b@richseifert.com

GEORGE WALLNER, AA7JV
gwallner@gwallner.com

LEE FINKEL, KY7M
ars.ky7m@gmail.com

Advisors.....RUSTY EPPS, W6OAT
w6oat@sbcglobal.net

TIM TOTTEN, N4GN
n4gn@n4gn.com

HistorianROSS FORBES, K6GFJ
k6gfj@comcast.net

Beacon Project.....PETER JENNINGS,
VE3SUN/AB6WM, IARU LIAISON,
BEACON WEBSITE

CHARLES MASON, W4NJK
BEACON OPERATOR LIAISON

Video Library.....DICK WILSON, K6LRN
k6lrn@arrl.net

WebmasterJOHN MILLER, K6MM
webaron@gmail.com

Admin Services.....DOUG BENDER, WW6D
newsletter@ncdxf.org

Editor-in-Chief.....LEE FINKEL, KY7M
ars.ky7m@gmail.com

Graphic Design.....DEBI SHANK
debi.shank.design@gmail.com

From the President's desk

YOU MAY NOTICE A NEW FACE ON THIS COLUMN — I was elected president at the April 2021 NCDXF board meeting. John Miller, K6MM, has served the Foundation well and all of us thank him. John isn't going anywhere; he is still the webmaster, still on the Board of Directors, and still looking for a DXpedition to join or work.

Lee Finkel, KY7M, is now the NCDXF newsletter's Editor-in-Chief. Lee has been on the board for a while, and is a very active DX traveler, especially for a contest — he was a strong member of the Voodoo Contest group. Lee brings experience and contacts to the newsletter and the Foundation.

I'm often asked, "When will the next DXpedition be on the air?" "Who's going where?" "When will this *lockout* of DXpeditions end?" The short answer is, "We don't have anything to report, nor any guesses based on data, or even rumors. We know several teams are working on travel, but nothing is *booked* yet." For information about DXpeditions, keep up with your favorite news source or rumor mill. W3UR's DailyDX is a good source of information.

Another question often asked, "What can I do to help get DXpeditions back?" My answer is: "Get a Covid-19 vaccine, encourage everyone you talk with to get a vaccine, and support Covid-19 vaccines in every country." Ops and teams are willing and ready. When they can travel, they will be back on the air. Most of the countries that are either waypoints (3D2, A3A, ZL, KH6, ZS) or sources of boats (ZL) are completely locked down and not allowing any travelers. Vaccines will lead to lifting of those restrictions.

That said, Ken Opskar, LA7GIA, led the JWØW effort just completed! Excellent trip.

In this issue, Ned Stearns, AA7A, covers the *Braveheart* story; Warren Merkel, KD4Z, provides an update on the RIB project; Don Greenbaum, N1DG, has an article about distributions (to our Cycle25 fund) and appreciated securities; Craig Thompson, K9CT, writes about the Cycle25 fund, and Michael Lippert, W3MLJ, writes about his participation in the youth camp, sponsored by Neil Rapp's (WB9VPG) Youth on the Air organization.

Our Board of Directors has reviewed the QSL policy for sponsored DXpeditions and now NCDXF only requires a DXpedition to load to Logbook of the World (LoTW) within a year of returning home. Other QSL methods and options are at the choice and discretion of the DXpedition organization. Costs, resources and work have risen significantly for QSL responding for major DXpeditions; LoTW is now the default, it's an efficient way to get credit for working a DXpedition and can lead directly to DXCC credit.

Finally, as always, our mission continues to be a provider of necessary financial support for well-organized DXpeditions to rare, expensive, difficult DXCC entities, and to financially support advances in DXpeditioning skill, technology and infrastructure. We can continue that mission because of your support, and we thank you for your contribution.

73, de K6TD



The primary mission of NCDXF is to provide necessary financial support for well-organized DXpeditions to the rarest, most difficult, most expensive DXCC entities. We do this with funds contributed by DXers worldwide.

2016 South Georgia and South Sandwich Islands DXpedition using the callsigns VP8SGI and VP8STI. I had been on one previous DXpedition that involved blue water sailing to Kingman Reef in 2000 on a small-ish boat, the *Machias*. I went on the trip to the South Atlantic Islands in 2016 to fulfill a bucket list item and I knew full well that it would require spending a fair amount of time at sea in generally rough waters... much worse than anything that I had ever experienced before. I agreed to join the team and signed up for the 40-day adventure since I had high confidence in the capabilities of the *Braveheart* and its captain and crew.

Shortly after getting underway from port in the Falkland Islands, Nigel Jolly called our first team meeting. The 15-man DXpedition team sat down with Jolly and most of the crew to talk about the rules on the boat and how he and the crew would accommodate the team on the sail and during the island assault. Before he really got started, he said to the DXpedition team leader Paul, N6PSE, "It looks like you brought the whole cardiac patient ward on this trip." Looking around the mess room, it did appear that we failed to enlist the services of the 2016 Olympic gymnastics team but instead brought a ragtag collection of aging, bulbous hams. Paul, N6PSE, explained to Nigel that, like it or not, these are his customers. Ham radio DXpeditions had become one of the leading business opportunities for the *Braveheart* during the summer months in the southern hemisphere. Experienced operators such as myself had the spare time and spare income to par-



The *Braveheart* maintaining station off South Sandwich during the VP8STI operation.

Year	Callsign(s)	DXCC entity	QSOs	NCDXF funded?	DXpedition of the year?
1999	ZL9CI	Campbell	96,003	Y	Y
2002	VP8GEO/ VP8THU	S. Georgia/ S. Sandwich	43,810 / 26,618	Y	
2002	VP6DI	Ducie Island	51,101		Y
2005	FT5XO	Kerguelen	67,943	Y	Y
2006	ZL8R	Kermadec	40,425	Y	
2008	VP6DX	Ducie	183,584	Y	
2010	ZL8X	Kermadec	148,570	Y	Y
2011	VP8ORK	South Orkney	63,643	Y	Y
2014	FT5ZM	Amsterdam Island	170,110	Y	Y
2016	VP8SGI / VP8STI	S. Georgia/ S. Sandwich	82,847 / 54,655	Y	Y
2016	VKØEK	Heard	75,189	Y	Y
2018	VP6D	Ducie	112,015	Y	
2019	VP6R	Pitcairn	82,700		
2020	VP8PJ	South Orkney	83,770	Y	

ticipate in these sorts of endeavors... more so than younger participants in the hobby. Jolly slowly warmed to us on this trip after we showed that we could handle the environment and that we had considerable knowledge of matters of importance to this trip.

There is a special relationship that develops between the members of the DXpedition team and the boat with its crew on these extreme island excursions. The boat and crew are instrumental in reaching the island safely, building and breaking down camps, sustenance during the island stay and a safe return to the debarkation point. The DXpedition team on a trip of this nature is under a fair amount of pressure to produce a high volume of QSOs on as many bands as possible despite inhospitable conditions and the physical stress of travel in rough seas and survival in arctic weather.

A long relationship

The table contains the essential statistics of DXpeditions enabled by the R.V. *Braveheart* over the course of 20+ years.

Roughly 1.4 million DX QSOs were made possible by operations supported by this vessel. Eight of the 14 *Braveheart*-supported DXpeditions were awarded the Southwest Ohio DX Association's DXpedition of the Year Award. NCDXF has granted funds to every DXpeditionary team in the South Atlantic using the *Braveheart*. The vessel and its owner/crew has represented the best option for an affordable operation and has had the highest rate of success in this challenging game.

So, what will happen going forward in attempting to activate these remote, inhospitable Antarctic Islands? Will the new owners of the *Braveheart* be willing to work with DXpedition teams to pull off these complex, challenging adventures? Will the new Radio-in-a-Box (RIB) technology in development by NCDXF reduce the team footprint of the challenging DXpeditions in the future? Will the RIB permit the use of smaller teams and, subsequently, smaller vessels/crews? Will DXpeditions to Antarctic Islands only be possible when combined with scientific and government projects that use larger, more costly transport vessels? Only time will tell.

RADIO IN A BOX UPDATE

The RIB Goes Node-Red

Warren Merkel, KD4Z

George R. Wallner, AA7JV, introduced the “Radio In A Box” (RIB) initiative in the Spring 2021 issue of the *NCDXF Newsletter*. This ambitious RIB design integrates a complete radio system including power amplifier, heat management, and remote control in a watertight, portable container. The goal is rapid deployment with a minimal ecological footprint for DXpeditions.

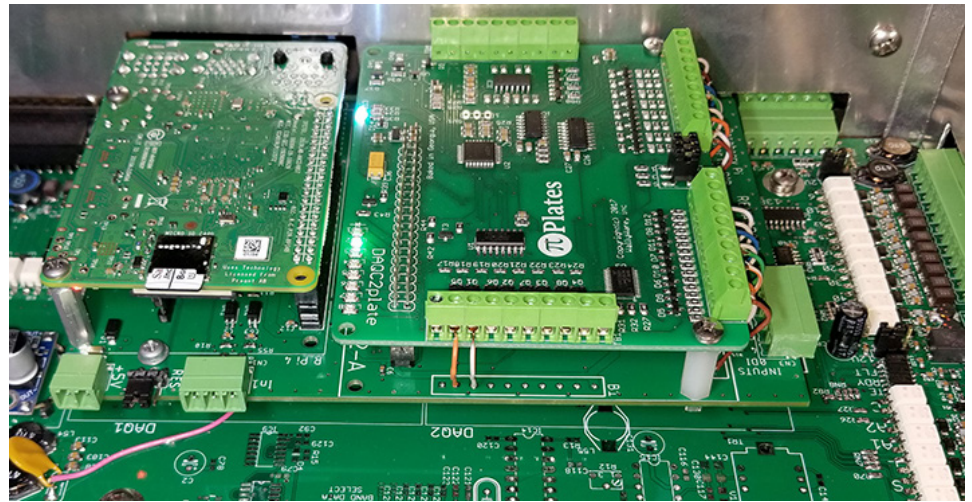
The first RIB design utilizes a powerful data acquisition system called DASylab®. This package requires the use of proprietary A-to-D converter hardware, as well as licensed software for operation. When combined with a laptop dedicated to run the DASylab® software, the out-the-door cost is significant.

I was contacted by Gregg Marco, W6IZT, RIB team member and frequent DXpedition participant, to see if there was a way to reduce the cost and complexity of the data acquisition hardware. Never one to walk away from a challenge, I decided to research options using the ubiquitous Raspberry Pi computer. It didn't take long to determine that the latest iteration, a Raspberry Pi 4 Model B, has plenty of horsepower to handle the processing requirements. Add an off-the-shelf Data Acquisition “HAT” board and the only thing left to decide is what software to use. Well, if you haven't heard of Node-Red yet, it won't be long before you will.

Enter Node-Red

Node-Red is a graphical programming tool that allows hardware to pass/process data using predefined logic encapsulated in “Nodes.” A “Flow” is just a visual definition of the data processing you want to achieve. Nodes pass data to each other with “Wires.” Since Node-Red is a visual tool, you merely select Nodes from a “Palette” (just a toolbox) and drag them onto the workspace, wiring them up to perform the desired actions.

There are more than 225,000 Nodes in the public repository, so it is likely a Node exists to do just about anything you need. If not, you can roll your own. Node-Red uses JavaScript as the programming language and gets its name from the Node.js web server buried under the hood. The best part is



RIB controller motherboard with adapter board for Raspberry Pi and A-to-D Hat.

Node-Red runs quite well on limited hardware such as the Raspberry Pi. Once installed, you use a web browser to work in the Node-Red workspace, and, of course, the resulting data can be served up by Node-Red as active web pages in the web browser.

Node-Red has become the go-to tool of the “Internet of Things” crowd. Why? It's Open Source and free!

Where to start?

Gregg, W6IZT, provided me with a screen shot of the existing implementation using DASylab® and a few notes on what the desired user interface needed to look like. I took it from there. In a matter of days, I had a proof-of-concept up and running. Node-Red is *that easy*. Well, not so fast! There are lots of details to work out, but the concept is sound, so I continued onward.

Since George, AA7JV, had created

a custom printed circuit board specifically for the now eliminated DASylab® hardware, a new adapter board was designed to accept the Raspberry Pi and A-to-D Hat boards. This also allowed adding in some extra circuitry to expand the I/O ports available on the Pi. The result is a triple stack of printed circuit boards.

The new RIB Controller interface

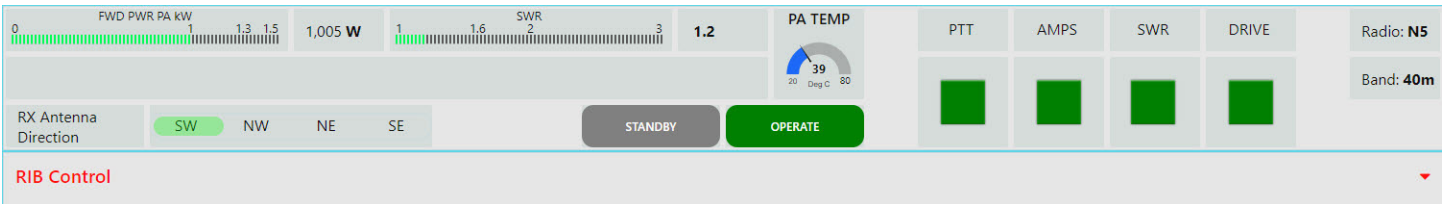
The new controller interface is designed for efficiency. The top section, or “ribbon,” contains the items most often demanding attention of the

operator. It's sized to take up as little screen space as possible, while being positioned at the top of the computer screen.

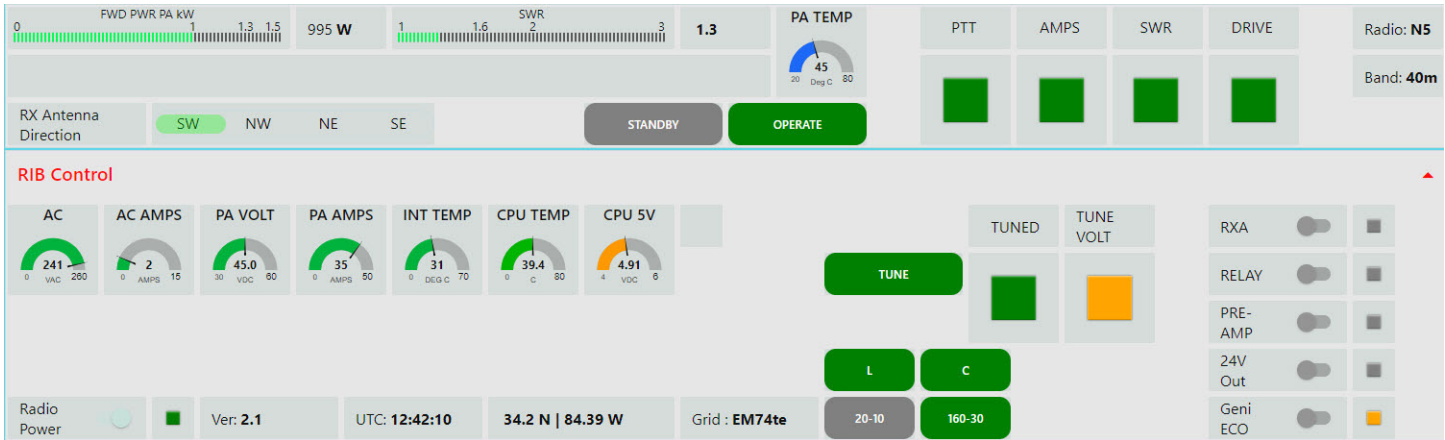
The lower section provides access to less often used controls and gauges covering more of the critical measurements including temperature, voltage, and current parameters. There are also option switches for controlling external devices such as receiver pre-amp, antenna tuner operation, and generator control.

When collapsed, valuable screen space is returned for use by N1MM+. This means the operating station will need only one laptop to run everything. A vast improvement over the prior system, which required an extra laptop at each operating position.

The remote control system has four basic functions, which are unique to a station operated remotely in the high-pressure environment of a DXpedition.



The RIB Controller Ribbon



RIB Controller with lower section opened

The first is remote control: PA settings, TX and RX antenna selection, all must be easy and intuitive.

The second function, and probably the most important one, is to give the operator the level of confidence and comfort needed to maximize their QSO rate. Visual presentation of essential information — mainly output power, SWR and PA temperature — is key to achieving that without distraction.

The third requirement is to prevent mistakes causing catastrophic failures, even when the operator is tired and distracted.

And finally, there must be enough functionality to enable remote troubleshooting and recovery. The system must strike the optimal balance between simplicity, visibility, and functionality, with minimum computer-screen-footprint. One of the biggest benefits

of using a programmable tool such as Node-Red is customization. The screen layout can be altered as new functionality is needed. Changes to the programmed Flows are possible, even on-site or remotely if required.

The new RIB Controller interface will be very easy to use and give the operator quick access to monitor all operational parameters of the system.



Donate to NCDXF using your RMD and save money on taxes

STRETCH YOUR IRA DISTRIBUTIONS. DID YOU KNOW YOU CAN USE PART of your IRS Required Minimum Distribution (RMD) to donate money to NCDXF and save taxes on your distribution at the same time?

After tax reform arrived in 2018, QCDs (Qualified Charitable Distributions) became more valuable than ever. Many taxpayers now take the standard deduction, eliminating the tax deduction for charitable gifts. QCDs add to the standard deduction by allowing the donations made from the IRA to be excluded from income. With a QCD, you get a tax break for your charitable contribution even if you are using the standard deduction.

Another benefit of a QCD is that the amount transferred from the IRA to the charity is not included in your adjusted gross income (AGI) for the year. By not including the distribution in AGI you can potentially avoid the loss of exemptions, deductions, credits and phase outs, AMT (alternative minimum tax), the 3.8% surtax on net investment income, and the increase in Social Security premiums for Medicare Part B and Part D.

Talk to your tax advisor about the benefits of using your IRA to fund your yearly NCDXF contributions.

~ Don Greenbaum, NIDG

CONTRIBUTIONS

NCDXF relies heavily upon the generosity of its contributors to fund various projects. We ask you to consider making an annual contribution of US\$50 or its equivalent in foreign currency. However, we do not wish to exclude anyone from the FOUNDATION for financial reasons. If \$50 is not within your budget, then please give what other amount you can. Naturally, we welcome contributions in excess of \$50! NCDXF is an organization described in Section 501(c)(3) of the Internal Revenue Code and all contributions are tax-deductible to the extent permitted by law for U.S. taxpayers. Send your contribution to: NCDXF, P.O. Box 2012, Cupertino, CA 95015-2012, USA. You may also contribute and order supplies online via our secure server, visit www.ncdxf.org/donate.



Region 2 YOTA Summer Camp

Michael Lippert, W3MLJ

WELL, WHAT A GREAT SUCCESS FROM the first Region 2 Youth on the Air (YOTA) summer camp that took place in the Cincinnati area in June 2021. Many things happened, including a high-altitude balloon launch, kit building, ARDF, antenna building, contesting, an ARISS contact, satellite contacts and so much more!

There were many fun times during this camp, but one of the highlights for me was meeting other youth hams. In my area, Western Pennsylvania, there are few youth hams, and even less that are active, so it was very refreshing to see the many youths active and on the air.

We all arrived on a Sunday and for the first few hours we all talked, played around on the radios, and got a tour of the museum. After dinner there was an amazing keynote speech by Tim Duffy, K3LR, followed by some rules and basics of what was going to happen over the week. We ended the day back at the hotel shack, a room without beds that was set aside for us and equipped with a simple Hex beam for 10-20 Meters and an OCF for 40 and 80 Meters, along with an ICOM 7300. Even though there was only one radio, we all got a chance to work the special event call for the camp, W8Y.

The second day we started off with a kit build and built a receiver for

our ARDF (Amateur Radio direction finding or foxhunt) that we would use later in the week. Building was a great time! Thanks to Sam Rose, KC2LRC, for running the kit build. Later in the day we started our Contest Workshop given by Bryant Rascoll, KG5HVO, followed by an eyeball sprint. The first one was a straightforward one with not much interference; the second eyeball sprint was very fun. QRM was provided by the volunteers in the form of "HOLAAAA" who gave fake calls over and over. It was a fun time! After that we went back and operated in our hotel shack as W8Y.

On Tuesday, we started out in the

morning with a presentation by Will Jourdain, AA4WJ, on D-STAR. ICOM provided ICOM 705s for us to use. My favorite part was sending pictures from our phones to the radio and transmitting the pictures over to other radios on the same frequency by D-STAR. After that, we went to the APRS Workshop given by Tom McElroy, W4SDR, and Jack McElroy, KM4ZIA. How they use APRS on their balloons was very interesting. After that, we launched our big, high-altitude balloon. It went very far and was heard all over the US on 2 Meters, ascending to 110,000 feet, before it landed in northern Ohio. We also launched some smaller bal-



Camp attendees participate in building receivers for ARDF.

loons, one of which made it to Quebec, Canada, before it went down. After that, we went to Dave and Busters for dinner and had a blast playing many games.

Wednesday was a very full day that started with a visit to the National Voice of America (VOA) Museum of Broadcasting to set up for an ARISS (Amateur Radio on the International Space Station) contact. We used a telebridge to a station in South Africa to contact the ISS. This was one of the coolest parts of the camp. (You can view all our events like this one by going to the Youth on the Air YouTube channel.) After the ARISS contact, we went to Kings Island, an amusement park with many roller coasters and rides, and we also did some VHF sprints while there.

The next day, we started with a satellite presentation by Ruth Willet, KM4LAO. We had many Arrow antennas for operating the satellites and made many contacts as W8Y. The VOA Museum was a great place to work the satellites with the big fields surrounding us. Some campers contacted each other on the satellites while only 100 feet away from each other. After the satellite workshop, we used our ARDF kits that we had built on Monday. Thanks to Robert Frey, WA6EZV, and Jocelyn Brault, KD8VRX, for setting it up. That, too, was a great time. After that we also got some kits to take home with us to build the FOX.

Later that day we had a pool party and then went on Ham Talk Live.




Camp attendees operate from the hotel shack.

The final day featured my personal favorite part of the camp: antenna building. I personally built a 20 Meter end-fed up in a tree. It worked, but not well. On the RBN, I only saw one hit at 7 dB, but I was only using 5 Watts and an end-fed built in five minutes, so I didn't really expect much. This workshop was run by brothers Andrew Mulluzzi, KK4LWR, and Tony Mulluzzi, KD8RTT.

At the end of the day, we had our closing ceremonies before returning to

the hotel and saying "Goodbye."

This camp experience took two years in the making, but I believe everyone had a great time — I know I did. I have to give a big "Thank you" to all our sponsors and the volunteers who made this possible, especially the members of NCDXF. The camp was a very big undertaking by the staff and a big "Thanks" goes to Neil Rapp, WB9VPG, our Camp Director, and the others who helped to make it all possible. 

50 Years Ago A Blast From the Past

**West Coast DX Bulletin
published every week by the Marin County DX Group
September 28, 1971**

One of our local QRPers dropped by recently, his brow somewhat serrated. After beating around the bushes a bit without raising any squirrels, he finally got to the point. "You know," he said, "since Labor Day I have been confused. You remember the ET3ZU/A Red Sea operation? Well, everytime the ET3 would ask the stations to stand by so that they could listen for DX stations, this W1 would be in there full bore. Finally someone called the W1 on this and his reply was that to the ET3ZU he was DX." The QRPer put another notch in his ruffled brow and asked: "What is the criteria?" Son of a Gun, what could we say that Ernest Hemingway has not already said. Logic is a moveable feast and some can mix logic and rationalization to feed their DX total anytime. Or as Einstein said, all things are relative. And some more so. \$9.00 for a full year of obtuse observations ... \$10.50 brings the confusion by airmail."

NCDXF Director Profile



The NCDXF Director's Profile in this issue is a special one: John Miller, K6MM, who served on the Board as President of NCDXF from 2017 until April 2021, when he decided to step back a bit. Perhaps it's the longest anyone has served as president, but as you can read, John has been a leader in everything in which he gets involved. During John's tenure, the NCDXF fund grew substantially through his fostering of the Cycle 25 program. He oversaw the production of eight newsletters and started the Director's Profile column. He oversaw the new DX Beacon controllers and the development of the Dual Band Discone antenna for improving beacon reception. Following his experience on the Baker Island (KH1/KH7Z) DXpedition, John encouraged NCDXF sponsorship of the Radio in a Box (RiB) project. He also supported the idea of a NCDXF DXcellence Award. He also serves as the webmaster for NCDXF.

In other activities, he has co-chaired the International DX Convention (IDXC) in Visalia for many years when it was run by the Northern California DX Club (NCDXC). John's leadership and volunteerism continues to make a lasting contribution to Ham Radio and the world of DXing. Thanks John! There's one item that John usually fails to mention: he also holds a PhD in chemistry!



NAME & CALL SIGN: John Miller, K6MM

PAST CALLS: WV2BQJ, WA2BQJ, WA6OMA, KE6MI

WHAT ARE YOUR PREVIOUS QTHS? I'm originally from Syracuse, NY, but have lived in Cleveland, OH; Cologne, Germany, and Lansdale, PA.

WHAT WAS YOUR PROFESSIONAL CAREER? *Medical diagnostics industry (20 years)* Syntex-Syva Corporation — various R&D, marketing and sales positions. Developed clinical diagnostic products used in hospitals and physician offices. *Human resources management (15 years)* DBM — marketing & sales executive. Provided corporate outplacement consulting and HR services to Fortune 500 companies. *Adjunct faculty (5 years)* Pepperdine University — Chairman, Presidential/Key Executive MBA program in Northern California.

NCDXF LEADERSHIP POSITIONS: President (2017-2021), Director (2010 to date) and Webmaster (2009 to date)

OTHER LEADERSHIP POSITIONS? *President*, Northern California Contest Club (2008-09); *Director*, Northern California DX Club (2012-15); *Chairman*, California QSO Party (2017-19); *Founding Member* CWops (#11) (2009); *Contributing Editor*, National Contest Journal (2011 to date), and *Co-Chair*, International DX Convention (2011, 2013, 2015, 2017, 2019, 2021)

CURRENT DXCC STATUS: Mixed 332/340; CW 321/340; Phone 300/340; Digital 226/340; 8-Band DXCC; DXCC Honor Roll

DXPEDITION EXPERIENCE: *Operator* PJ7E-Sint Maarten (2010), K9W-Wake Atoll (2013), K1N-Navassa Island (2015), K5P-Palmyra Atoll (2016), KH1/KH7Z-Baker Is. (2018). *Pilot or Webmaster* NH8-Swains Island (2012), C82DX-Mozambique (2013), FT4TA-Tromelin (2014), 3GØZC-Juan Fernandez Island (2015), VKØEK-Heard Island (2016).

WHAT WOULD YOU TELL SOMEONE WHO IS THINKING ABOUT CONTRIBUTING TO NCDXF? Next year (2022) will be NCDXF's 50th anniversary. During the last five decades, the Foundation has granted over \$1.5 million to support hundreds of DXpeditions and DX-related activities. Those grants are funded by generous donations from NCDXF contributors — avid DXers who know that their money will be well spent because of the Foundation's excellent reputation for vetting grant requests. If you want to continue to make DX happen, and help keep DXpeditions alive, then consider becoming an NCDXF contributor now (www.ncdxf.org/pages/contribute.html)

AS AN AVID DXER WHAT SORT OF TRENDS DO YOU SEE? Some trends seem to be working against each other. Technology improvements, especially SDR-based transceivers and digital-mode software are making it easier than ever for avid DXers to get in the game during the current low sunspot cycle. Getting that first DXCC award with 100 entities is still an exciting accomplishment and very doable today. DXers in areas with restricted antennas now have the option of operating remotely. On the other hand, for DXpedition leaders, getting permission to visit the rarer entities is becoming increasingly difficult, more expensive, and in some cases, very dangerous. The good news is that over the next decade we will likely see innovative tools such as the RIB (Radio-In-A-Box) concept used to reach some of those very rare DXCC locations remotely. One trend seems clear, however: it will become increasingly difficult for avid DXers to work and confirm 331 discrete entities to reach the DXCC Honor Roll. The question, of course, is how important is that goal for you personally?

WHAT ARE YOUR TIPS FOR DX'ERS? Follow Teddy Roosevelt's advice: "Do the best you can, with what you have, where you are." Invest in good antennas. If

you can't hear 'em, you can't work 'em. Get the best transceiver you can afford. Turn it on, put on your headphones, pick a band, and LISTEN. Tune around and LISTEN some more. Keep tuning and listening – don't just watch a DX cluster for clues on what band is open. You can learn a lot about propagation by just being patient and listening. Try some new bands: 6M, 60M, 160M. Add Morse Code to your toolkit, it's one of the best modes to get through DXpedition pileups. Join a local DX club. Attend an in-person or virtual DX convention. Last but not least: follow the DX Code of Conduct.


HOW DID YOU GET INTO HAM RADIO? In the summer of 1958, my high school buddy Gary Lindstrom, K2UZI, invited me over to his house in Syracuse to listen to some US stations coming in over his Heathkit Mohawk RX-1 receiver. As I watched him effortlessly work some of them using his Heathkit Apache TX-1 transmitter on 20M SSB and homebrew Yagi, I was hooked. I got my Novice license that summer and the rest is history. My first station was a Hallicrafters SX-99 coupled with a Heathkit DX-40. Using a long wire antenna, I was able to work the world on 10M.

DESCRIBE YOUR SHACK AND ANTENNA SYSTEM: Currently: K3, P3, KAT500 and KPA500. ACOM 1000. SteppIR 2-element Yagi. G5RV (80/40). Cushcraft R7. 160M Inverted L and HWV Vertical. Several upgrades planned later this year.

MARRIED? KIDS? GRANDKIDS? I've been married to Celestine for 54 years. We have 3 adult children and 4 very cool grandkids.

ANY OTHER HOBBIES BESIDES HAM RADIO? I enjoy creating music on my Roland BK-9 synthesizer, website design, and exploring the back roads of the Bay Area on my Harley Davidson.

WHAT MIGHT SOMEONE BE SURPRISED TO KNOW ABOUT YOU? During my career, I formed a few company bands consisting of musicians and singers who were my fellow employees; I played keyboards. We put smiles on a lot of faces at several national sales meetings.


FINAL COMMENTS? Ham radio has enriched my life for six decades now. It has given me the opportunity to work the world, meet forever friends, and become a better person. As I grow older within the fellowship of Amateur Radio, there's no place I'd rather be. 

NCDXF awards major grant to 3YØJ Bouvet Island DXpedition

THE NORTHERN CALIFORNIA DX Foundation is pleased to announce it is granting \$100,000 to the 3YØJ Bouvet Island DXpedition planned for November 2022. Bouvet Island is #2 on the ClubLog Most Wanted List worldwide. DXpeditions to rare entities like

Bouvet Island that are so remote are becoming more expensive and more logistically challenging, a trend that we believe will continue. Hopefully this major DXpedition marks the return of DXpeditions to some of the entities at the top of the most needed DXCC

list in this new solar cycle and in the post-pandemic world.

We wish the 3YØJ Bouvet Island DXpedition team a safe and very successful trip. For more details, visit 3y0j.no. ~ excerpted from a recent NCDXF press release 



Cycle 25 Fund & Cycle 25 Society



TO HELP SUPPLEMENT NCDXF's mission to provide necessary financial support for well-organized DXpeditions to rare and financially demanding DXCC entities, NCDXF established the Cycle 25 Fund in 2016. The goal of the Cycle 25 Fund is to double NCDXF's endowment through significant estate gifts from current DXers, which will allow NCDXF to continue its mission throughout sunspot Cycle 25 and beyond.

NCDXF Director, Craig Thomp-

son, K9CT, who oversees the Cycle 25 Fund, has established a Cycle 25 Society for those who participate. Thompson said, "The Cycle 25 Society is for honoring those special individuals who commit to estate giving before the next sunspot maximum. When you let us know your plans, we will honor you on our website and send you a special Cycle 25 Society pin as a memento of your thoughtfulness."

Craig invites DXers interested in the Cycle 25 Society to visit the NCDXF website www.ncdxf.org/pages/estate.html for more information. You can also contact Craig to discuss Cycle 25 Fund funding

Since the announcement of the Fund, the following individuals have made estate-planning commitments:

Tom Berson, ND2T	Alan Rovner, K7AR
Al Burnham, K6RIM	Bob Schmieder, KK6EK
Bruce Butler, W6OSP (sk)	Rich Seifert, KE1B
Rusty Epps, W6OAT	Charles Spetnagel, W6KK
John Grimm, KØYQ	Ned Stearns, AA7A
Rich Haendel, W3ACO	Randy Stegemeyer, W7HR
Glenn Johnson, WØGJ	Craig Thompson, K9CT
Hardy Landskov, N7RT (sk)	Dan White, W5DNT
Ed Muns, WØYK	

DXPEDITION LENDING LIBRARY

NCDXF has a number of VHS/DVD videos and Microsoft® Power Point presentations on CD-ROM available for loan to organizations wishing to show them at their meetings. There is no charge to use the programs in the FOUNDATION'S library, but clubs borrowing materials are responsible for postage in both directions. To view the complete listing of programs available for your club's use, visit our website, www.ncdxf.org, and click on "Videos."

options, including specific bequests, designation of IRA beneficiaries and purchase of an annuity or life insurance.

Show your support for NCDXF

NCDXF offers several ways for you to show your love for DXing! Impress your friends with a gold lapel pin (\$7), show up at your next hamfest sporting the NCDXF hat (\$12) or don a NCDXF T-shirt (\$15) to set up your Yagi on Field Day. Send out your QSLs with an NCDXF label (roll of 500, \$7). Mail in the attached form or visit www.ncdxf.org to order today.



Contribution & Order Form

YES! I want to contribute to NCDXF!

Contribution \$ _____

YES! I want to show my support for NCDXF. Send me the following supplies (shipping included):

_____ T-Shirt(s) @ \$15 each \$ _____

(indicate size M / L / XL / 2XL / 3XL)

_____ Hats @ \$12 each \$ _____

_____ Lapel pin @ \$7 each \$ _____

_____ Roll(s) of labels @ \$7 each \$ _____

Total contribution & supplies \$ _____

Call sign _____ Name _____

Mailing Address _____

Email _____

Check enclosed or Charge to Visa / MC / AmEx

Card number _____ Exp. _____

Signature _____

Mail to NCDXF, PO Box 2012
Cupertino, CA 95015-2012